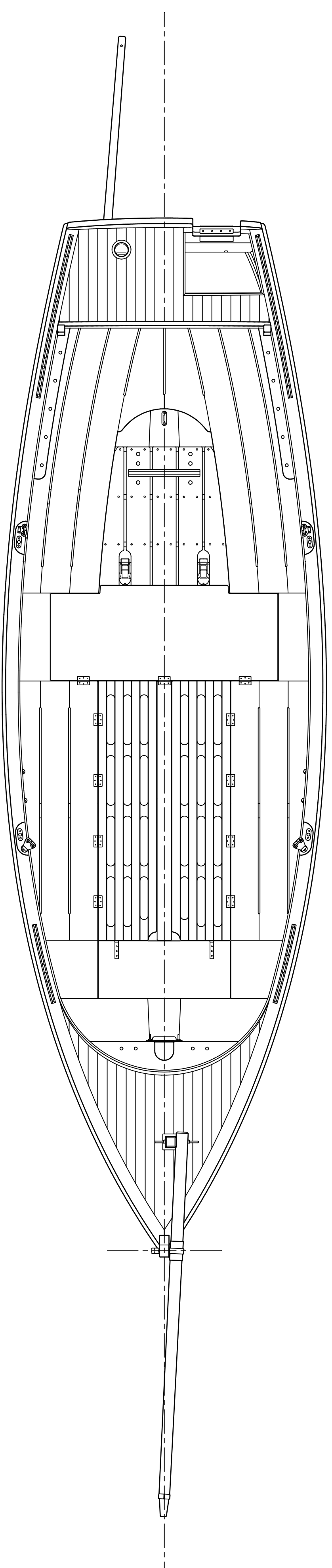
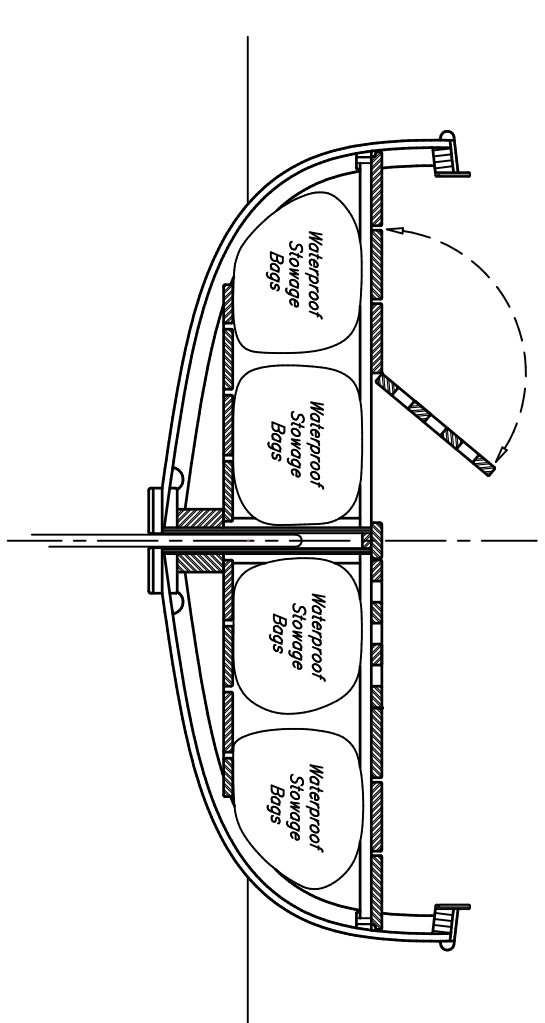
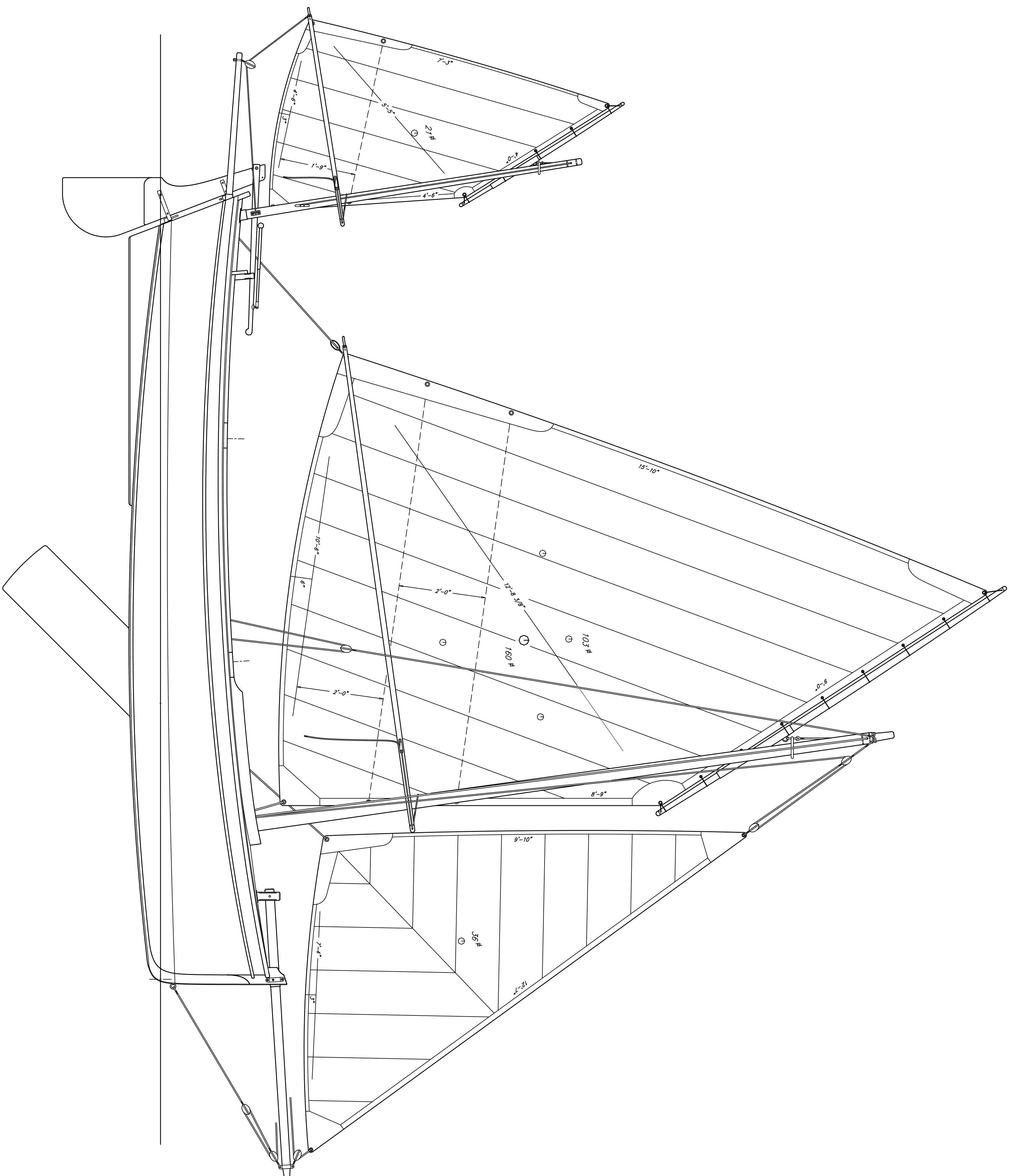


L/OA 18'-3" (5.5m)
LWL 17'-4" (5.3m)
Beam 5'-7" (1.7m)
Draft 9'4"-0" (2.3m/1.22m)
Displacement 1200 lbs. (544kg)
Maximum 1600 lbs. (725kg)
Sail Area 160 sq. ft. (15m²)
Ballast 400 lbs. (181kg)
Construction: wood-epoxy strip-planking.



D18 "MST" Design No.14
Sail Plan and Accommodations
Don Kuyiko, Designer Nelson, B.C. Canada
September 1, 2002 Scale: 3/4" = 1'-0"
Drawing #1401